

EN

The Municipality of Steinfort

The municipality introduces itself



Commune de
Steinfort

Our contact details



Commune de
Steinfurt

Municipal Administration Steinfurt

4, Square Général Patton
L-8443 Steinfort

Tel.: (+352) 39 93 13 1
Fax: (+352) 39 00 15
info@steinfort.lu
steinfort.lu



#mirsistengefort
Commune de Steinfort



Opening hours:
Monday/Tuesday/
Thursday/Friday:
09:00–11:30/
14:00–16:00
Wednesday:
09:00–11:30/
closed in the
afternoon

*You can also make an
appointment outside
of the regular opening
hours.*

Emergencies

Technical emergency
Tel.: (+352) 39 93 13 55 5
Monday–Friday:
15:00–7:00
Saturday/Sunday
and public holidays:
24/24 hours

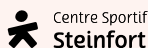
Emergency in case of death

Tel.: (+352) 39 93 13 55 4
Only on Saturday
mornings from
10:00 to 12:00

Bank account numbers of the Municipality of Steinfurt

- BCEELULL–
LU96 0019 2601
0125 4000
- BGLLLULL–
LU56 0030 0902
0327 0000
- BILLLULL–
LU74 0023 1320
0200 0000
- CCPLLULL–
LU87 1111 0011
0942 0000
- CCRALLULL–
LU26 0090 0000
0320 0631

Pay with Payconiq



Sports Centre Steinfurt

7A, rue de Hagen
L-8421 Steinfort
Tel.: (+352) 39 93 13 40 0
Fax: (+352) 39 93 13 94 0
piscine@steinfort.lu
centresportif.steinfort.lu



Primary School Steinfurt

rue de Kleinbettingen
L-8436 Steinfort
Tel.: (+352) 39 93 13 30 0
Fax: (+352) 39 93 13 93 0
primaire.steinfort@ecole.lu
schoul-stengefort.lu



Maison Relais Steinfort
7B, rue de Hagen
L-8421 Steinfort
Tel.: (+352) 39 93 13 37 0
Fax: (+352) 39 93 13 93 8
maisonrelais@steinfort.lu
maisonrelais.steinfort.lu



The municipality introduces itself

The Municipality of Steinfort, which has developed into one of the modern living and working centres in the west of the country, consists of the villages of **Kleinbettingen**, **Hagen** and **Grass** in addition to the main village of **Steinfurt**. The total area is just over **12 km²**. Currently, almost **6,000 citizens** from about **90 different nations** live in the municipality.

Thanks to the many shops, associations, events and the great variety of leisure activities, Steinfort is a very lively municipality and at the same time offers many opportunities to relax; for example, on one of the hiking trails that remind us of the cultural heritage of the municipality or during a cycling tour on one of the cycle tracks.

The Municipality of Steinfort in the canton of Capellen is in the immediate vicinity of the A6 motorway leading to the Belgian border and to Luxembourg City. The municipality is also very well served by public transport. The Kleinbettingen railway station provides access to numerous trains that, among other things, serve the capital city of Luxembourg as well as a remarkable number of stations in the direction of Brussels. In addition, numerous bus lines guarantee a high degree of mobility.

It goes without saying that the Municipality of Steinfort is committed to good environmental quality in order to ensure the health, well-being, and quality of life of all its citizens. Waste separation in collaboration with the Syndicat Intercommunal pour l'hygiène

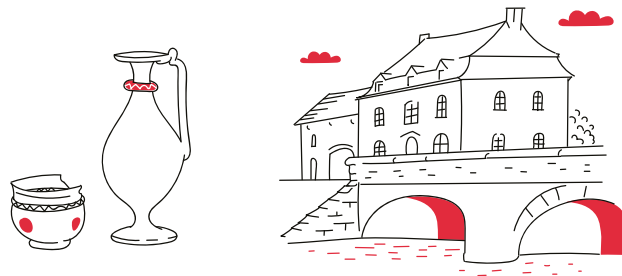
publique du canton de Capellen (SICA), involvement in the "Climate Pact" and the "Climate Alliance Lëtzebuerg" to reduce greenhouse gas emissions, fundamental energy counselling by the "Climate Agency" and ecological subsidies are only a few examples of the measures taken in recent years to ensure a better quality of life. In addition, the Municipality of Steinfort was awarded the "Fairtrade Gemeng" label in 2015.

In 2019, the European Charter for Equality between Women and Men in Municipal Life was signed, as well as the "Pact of Living Together" in 2022.

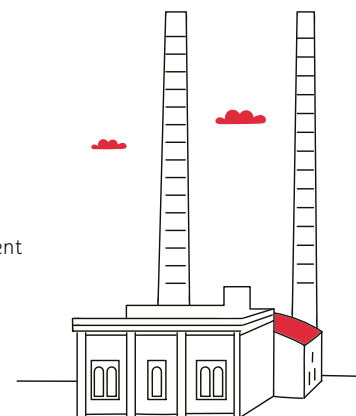
In summary, Steinfort is a very dynamic municipality with a high quality of life at all levels.

History

Steinfort, whose name probably comes from an old, gravelled ford across the Eisch, can look back on a long and interesting history. Archaeological finds prove that the region was already inhabited in Celtic and Roman times.



- Early 14th century** • Steinfort belongs to the territory of Sterpenich
- 1680** • Opening of the Thurn & Taxis postal route Brussels-Attert-Luxembourg-Trier
- 1734 – 1828** • Important stagecoach station by the bridge over the Eisch
- 1794** • Luxembourg becomes the "Département des forêts", Steinfort is incorporated into the canton of Arlon
- 1795** • Steinfort becomes the cantonal capital, but loses this status again one year later
- 1796** • Steinfort becomes the capital of the municipality
- 1839** • The Treaty of London establishes the present borders of Luxembourg
- Sterpenich is annexed to Belgium
- Grass becomes an enclave of the Municipality of Steinfort
- 1846** • Construction of the melting furnace and the brocards (crushers)
- 1859** • Opening of the railway line Luxembourg-Bettingen-Arlon-Brussels
- 1873** • Opening of the railway line Pétange-Steinfort-Ettelbrück
- 1918** • Peak production at the Steinfort ironworks
- 1919** • Dismantling of the rolling mill and relocation to Valenciennes
- 1923** • Opening of the brick and cement factories as extensions to the steelworks
- 1929** • Installation of a new Thomas converter
- 1930** • Draining of the reservoir in Steinfort (the first in Luxembourg) after the drowning accident of the forest ranger
- 1932** • Closure of the Steinfort steelworks facilities
- 1934** • Closure of the brick and cement factories
- 1948** • Launch of a phenol factory in the former buildings of the steelworks
- 1964** • Closure of the phenol factory
- 1970 – 2022** • Creation of new residential areas, construction of new public buildings, redevelopment of the village centre



21st century

In recent years, the supply networks (gas, electricity, water, telecommunications) and the road infrastructure have been modernised. This modernisation is ongoing.

A new Maison Relais (child care center) has been built to provide parents with care for their children before and after school hours.

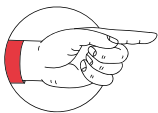
To enable local and regional businesses to flourish, an inter-municipal association has been established. It is responsible for the creation, establishment, promotion and operation of a regionally oriented business park in the Western Region (ZARO). The first site in Grass is primarily intended for craft enterprises.

On a tourism level, a high ropes course was built in the Steinfort forest and a nature reserve was formed around the old Steinfort dam, the first water dam built in Luxembourg.

The preservation of the historical and architectural heritage is very close to the heart of the decision-makers. For this reason, the municipality has acquired several old and valuable buildings and is investing in their restoration. In recent years, for example, the Villa Collart in Steinfort has been renovated to house an art gallery and a restaurant, among other things. In the future, the old school in Steinfort will be transformed into a third place that will house, among other things, the social grocery, and a second-hand shop.

As the Municipality of Steinfort is a development and attraction point according to the IVL concept, a new cross-border wastewater treatment plant was commissioned in 2021, also as a result of the creation of a large number of residential areas. Other ambitious projects, including a new sports centre, are about to be implemented in order to meet the new requirements.

More information:



steinfort.lu/la-commune/histoire

National emergency numbers

112

Fire and rescue services

113

Police Lëtzebuerg



112 Fire and rescue services

Call 112 for urgent interventions, e.g. rescue of injured and sick people, fires, floods, poisoning, pollution, damage, ...

More information:

112.public.lu/fr/urgences.html



113 Police Lëtzebuerg

Contact the Police Lëtzebuerg emergency number, 113, in case of an emergency, danger or threat.

More information:

police.public.lu/en/votre-police/appel-urgence-113.html



You can also contact the National Operations Centre by SMS using the "Silent Call" function in the Police Lëtzebuerg app.

These numbers are free of charge and reachable at all times.

GouvAlert

The government of the Grand Duchy of Luxembourg has developed a mobile application to warn the population via smartphones: "GouvAlert.lu". This free app has a double functionality:

- First, it enables **112** (Corps grand-ducal d'incendie et de secours) to broadcast warnings of major incidents. In addition, users have the option of contacting the emergency number **112** directly via the app. The call generated in this way is automatically geo-localised by **112** so that the emergency services can locate the caller and thus intervene quickly and precisely.
- It also allows users to be alerted via a notification on their smartphone when an emergency or crisis situation occurs that affects public safety.

This application complements the warning system of the Luxembourg authorities and is part of a comprehensive approach to raise awareness and educate the population about potential risks and how to protect themselves.

In terms of prevention, behavioural information as well as various emergency plans are also available in the app if there is no current warning.

More information:
infocrise.public.lu/en.html



Useful numbers in the event of disruptions

- **Water** (Steinfort Municipal Council): (+352) 39 93 13 55 5
- **Electricity** (CREOS): (+352) 80 02 99 00
- **Gas** (CREOS): (+352) 80 07 30 01

Help for victims

There are various support services for victims (children, teenagers, adults) who have suffered a psychological and/or physical injury, but also for perpetrators or witnesses.

More information:
Tel.: (+352) 20 60 10 60
violence.lu/en/home/



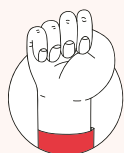
Useful gesture

If you are in distress, use this gesture to show yourself discreetly in public:

1. Open your hand and fold your thumb inward



2. Clasp the thumb and form a fist



Communication between fellow citizens - municipality

Mediation service

In order to provide an opportunity to resolve neighbourhood disputes amicably, the municipality has established a mediation service which:

- is voluntary and confidential,
- is free of charge for the parties concerned; the municipality pays the mediator's fees,
- makes it possible to find solutions that respect the interests of all parties involved,
- can be an alternative to costly court proceedings,
- appeals to the responsibility of the parties.

More information:
Tel.: (+352) 621 67 36 48
mediation@steinfort.lu
(Your emails will be forwarded to our external mediator: Me-Mo Mediation)

SMS2Citizen

The Municipality of Steinfort has set up a quick information service to pass on important news to registered fellow citizens.

With this service, called sms2citizen, registered citizens have the possibility to receive useful information (danger warnings, traffic alerts, problems related to the electricity, gas or water supply) free of charge via SMS to their mobile phones.

More information:
To register, visit the website:
sms2citizen.lu



Reporting service "Signalez-le"

The "Signalez-le" function on the Steinfort Municipality website is intended for the reporting of observations, problems, suggestions or complaints that are not of immediate urgency.

More information:
steinfort.lu/signalez-le



Intermunicipal associations

The Municipality of Steinfort is a member of several intermunicipal associations:



Hôpital Intercommunal de Steinfort - HIS
(Steinfort Intermunicipal Hospital- HIS)

More information:
his.lu



Syndicat des Eaux du Sud - SES
(Water Supply Association of the South- SES)

More information:
ses-eau.lu



Syndicat Intercommunal pour l'hygiène publique du canton de Capellen - SICA
(Intermunicipal Association for Public Hygiene in the Canton of Capellen Capellen- SICA)

More information:
sica.lu



Centre pour la conservation de la nature - SICONA
(Centre for Nature Conservation - SICONA)

More information:
sicona.lu



Syndicat Intercommunal de Dépollution des Eaux résiduelles de l'Ouest - SIDERO
(Intermunicipal Association for Wastewater Treatment West- SIDERO)

More information:
sidero.lu



Syndicat intercommunal pour la gestion des déchets des communes des cantons de Luxembourg, d'Esch et de Capellen - SIDOR
(Intermunicipal association for the waste management of the municipalities of the cantons of Luxembourg, Esch and Capellen- SIDOR)

More information:
sidor.lu



Syndicat Intercommunal pour l'Exploitation d'un Crématoire - SICEC
(Intermunicipal Association for the Operation of a Crematorium- SICEC)



Syndicat Intercommunal de Gestion Informatique - SIGI
(Intermunicipal IT Management Association- SIGI)

More information:
sigi.lu



Syndicat Intercommunal des Villes et Communes Luxembourgeoises - SYVICOL
(Intermunicipal Association of Luxembourg Towns and Municipalities- SYVICOL)

More information:
syvicol.lu/en



Zone d'Activités économiques à caractère régional dans la Région de l'Ouest du pays - ZARO
(Regional Economic Activity Zone in the Western Region of the country- ZARO)


More information:
zaro.lu

Notices & Regulations

Reider

Official notices and municipal regulations are published in the form prescribed by law by posting on the "Reider" (notice board) at the following locations:

- in Steinfort (Square Général Patton)
- in Kleinbettingen (rue de la Gare)
- in Grass (main street)
- in Hagen (main street)

 See map of the municipality



Virtual Reider

Parallel to publication on the above-mentioned notice boards, the municipality publishes notices, regulations and other information in electronic form on its website in a kind of "virtual Reider".

More information:
steinfort.lu/nos-publications/reider



Regulations and municipal taxes

The functioning of a municipality is governed by a set of rules laid down in the Municipal Act and the municipal bylaws.

More information:
You can find the various municipal ordinances that apply in the Municipality of Steinfort on the website.
steinfort.lu



More brochures:

- The municipality introduces itself
- Administrative procedures
- Urbanism
- Children and adolescents
- Seniors
- Social work and health care
- Environment
- Mobility
- Culture/Leisure/Club life/ Sports/Tourism

To ensure that the information in this brochure is up to date, you will find links to various websites under some of the topics.

However, you can always contact the reception of the Steinfort Municipality at (+352) 39 93 13 1 (or the number given under the respective topic) for more information.

If necessary, we will print the information/documents you need.

Editorial:

Public Relations & Equal Opportunities Units of the Municipality of Steinfort

Layout & illustrations:
101

**Municipal
Administration Steinfort**

4, Square Général Patton
L-8443 Steinfort

Tel.: (+352) 39 93 13 1

Fax: (+352) 39 00 15

info@steinfort.lu

steinfort.lu

#mirsistengefort

Supported by:



LE GOUVERNEMENT
DU GRAND-DUCHÉ DE LUXEMBOURG
Ministère de la Famille, de l'Intégration
et à la Grande Région

Département de l'intégration